

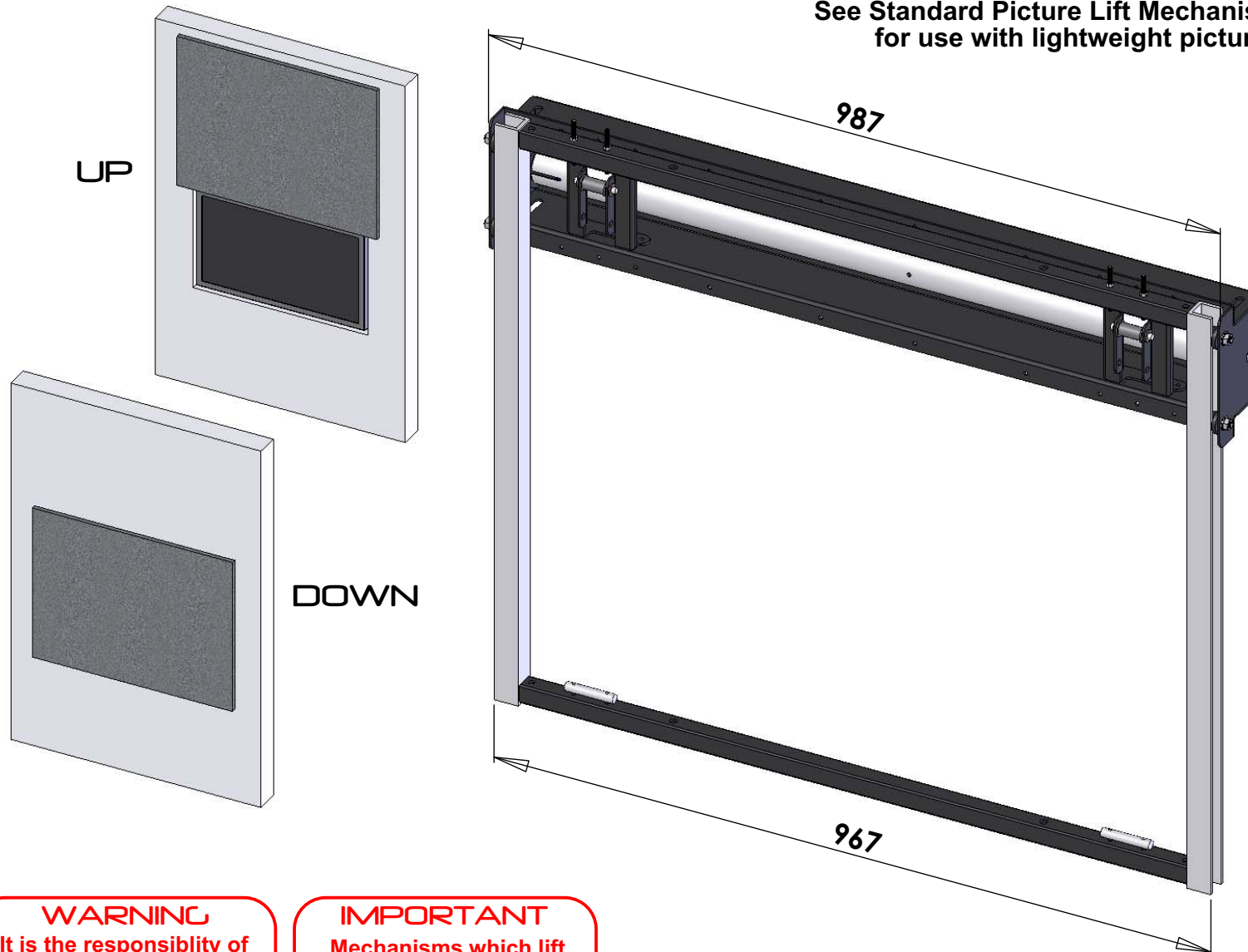
# PIC-H Picture Lift Heavy

## Technical Sheet

Sheet 1 of 2  
ISSUE: 003  
www.futureautomation.co.uk



See Standard Picture Lift Mechanism  
for use with lightweight pictures.



### FUNCTION

An electric mechanism that enables a picture to be used to hide a flat screen television.

Press the remote control and the picture moves up out of the way.

### SUITABILITY

This is a heavy duty version of our standard Picture Lift. Pictures or mirrors of up to 35kg can be lifted.

The screen and the mechanism need to be recessed into the wall.

### SPECIFYING

Check that there is enough height above the screen for the picture to move upwards. The mechanism can also be put below the screen to drop the picture down.

### CONTROL

Supplied with basic infrared remote control. Can be learnt by many learning remotes.

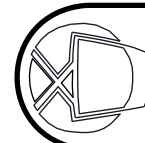
Also has switch control so can be operated by relays, switches, Crestron/AMX or Lutron systems.

### WARNING

It is the responsibility of the installer to warn all potential end users of the dangers of interfering with mechanisms during operation

### IMPORTANT

Mechanisms which lift or move weights need to be checked on a yearly basis for any damage which may result in an accident



# FUTUREAUTOMATION

# PIC-H Picture Lift Heavy

## Technical Sheet

Sheet 2 of 2  
 ISSUE: 003  
 www.futureautomation.co.uk



### EXAMPLE

Plasma screen is mounted on a 30mm deep flush bracket (FA - PFA).

PIC-H 2 framework shown, 900mm high with 700mm of total travel.

Mechanism fixed into recess 135mm high which is 60mm above screen recess. Width of recess minimum 1000mm, depth is minimum 80mm.

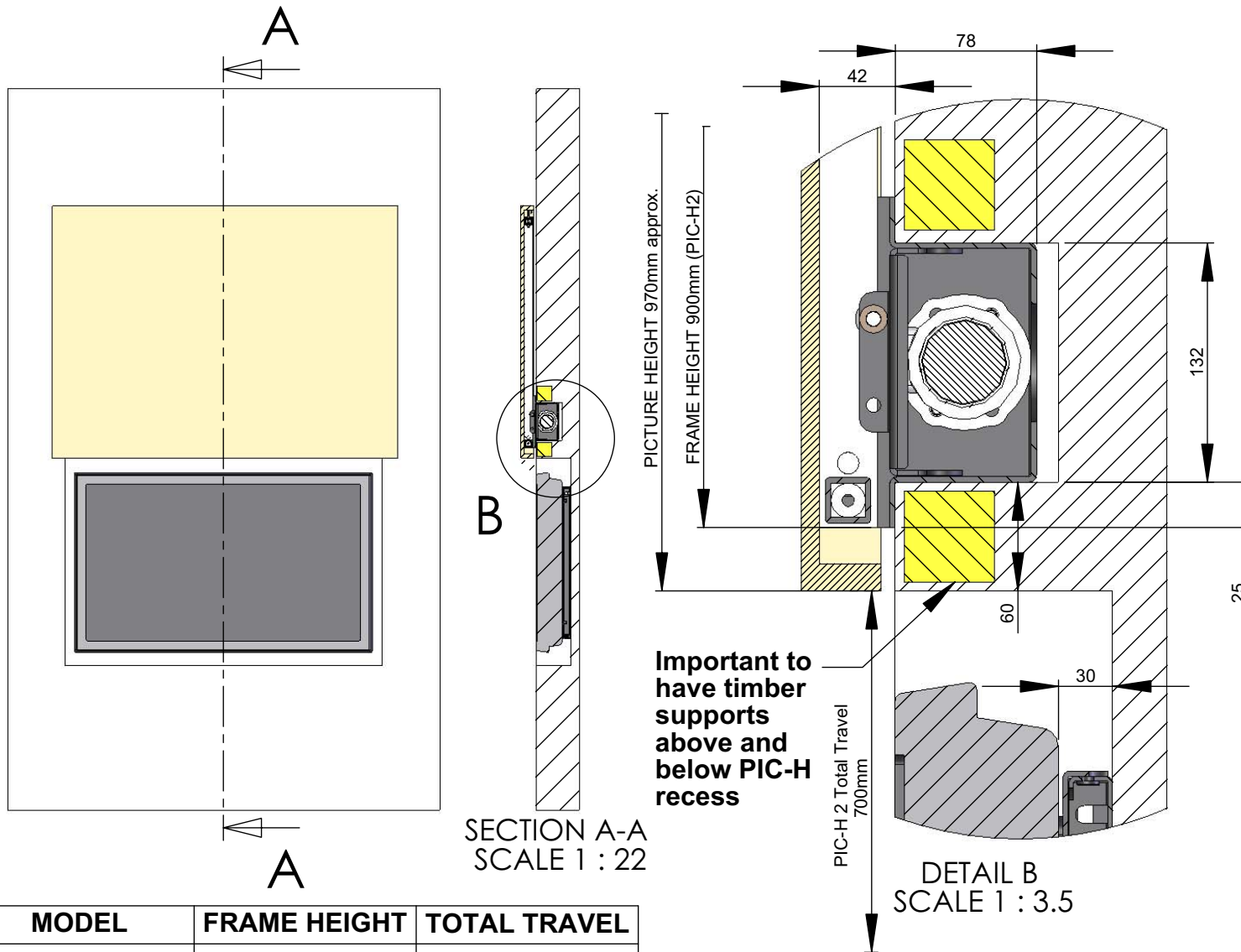
A control box, 200mm x 150mm x 50mm, needs to be located in an easily accessible location.

A four core mains cable from the control box to the mechanism is required.

A 1500mm long infrared lead is connected to the control box.

The PIC-H can lift 35kg max.

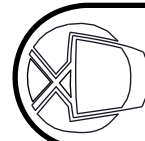
Panels can be mounted via brackets that screw to the back of the panel, or can be hung over the framework.



SECTION A-A  
 SCALE 1 : 22

DETAIL B  
 SCALE 1 : 3.5

MODEL	FRAME HEIGHT	TOTAL TRAVEL
PIC - H 1	800mm	600mm
PIC - H 2	900mm	700mm
PIC - H 3	1000mm	800mm
PIC - H Custom	Custom Height	Custom H - 200mm



# FUTUREAUTOMATION