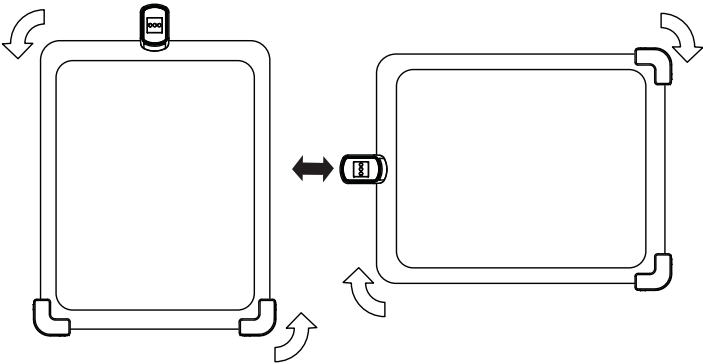


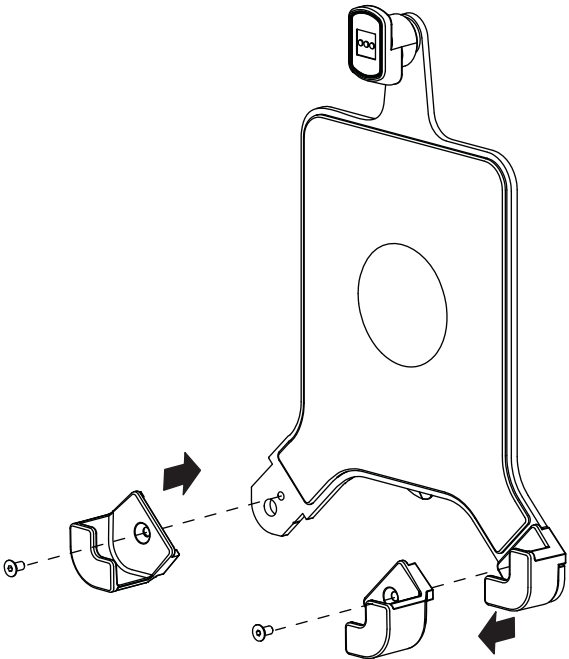
Portrait to landscape rotation

Almost every CBS monitor arm allows portrait to landscape rotation of the VESA head. This allows the tablet mount to be freely rotated and used as desired



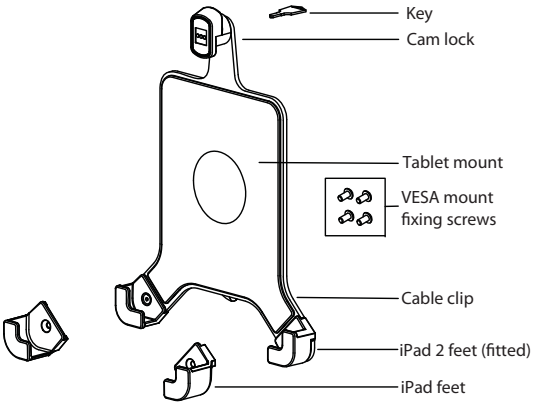
Setting up Tablet for iPad with cover

The Tablet mount includes a set of feet that can be used with an iPad whilst still inside it's cover. To fit these the feet must be replaced by removing the screws as shown and fitting the replacements feet

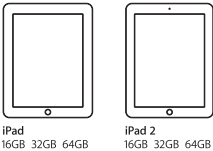


Installation instructions for Tablet Mount

List of components:



Compatibility:



Distributed by

www.colebrookbossonsauanders.com

WARNING

English

- Ensure desk / work surface / wall / partition is suitable to take the weight of the arm/s and attachments.
- Do not use this product for any purpose other than that for which it was designed.
- The Cam lock is only for theft deterrent purposes and provides no security guarantees
- Care should be taken to avoid trapping fingers.
- Do not dismantle or remodel the arms.
- Do not insert tablet before attaching to the arm.

MAINTENANCE and INSPECTION

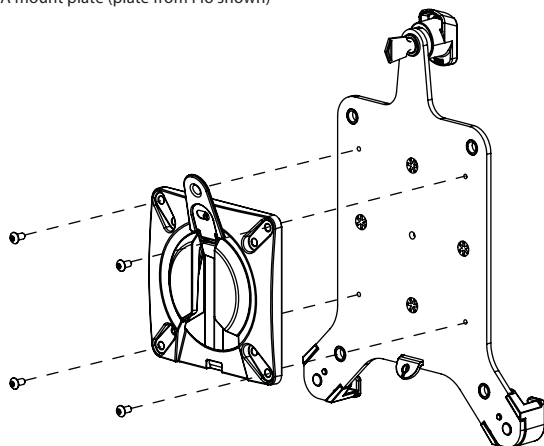
- Ensure all screws are tightened and occasionally adjust if needed.
- Clean with a damp cloth, NO solvent.

PATENT and REGISTRATION

- iPad is a trademark of Apple Inc. registered in the U.S. and other countries.

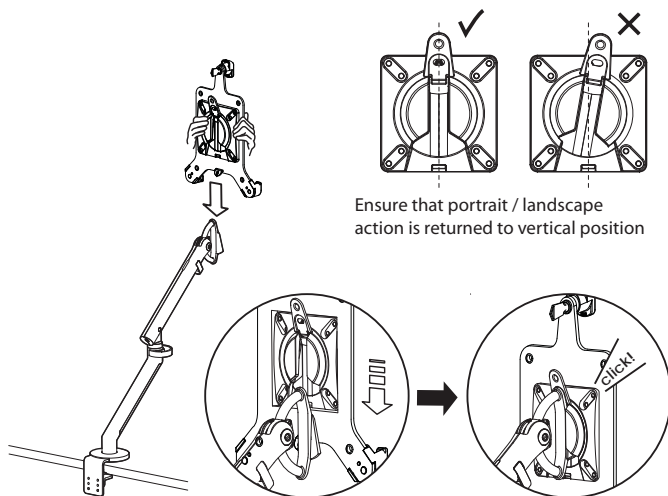
Fit VESA mount to rear of tablet mount

- 1 Use mounting screws supplied to attach the Tablet mount to the VESA mount plate (plate from Flo shown)



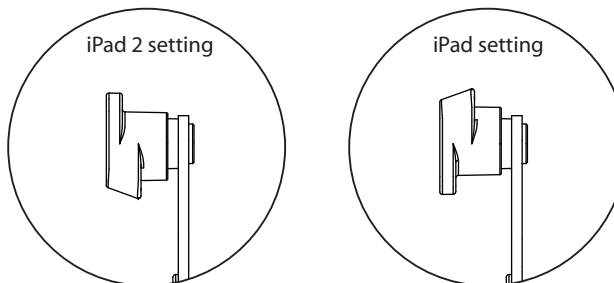
Attach tablet mount to the arm

- 2 Attach the Tablet mount according to the operating instructions for the arm. Flo shown for illustration purposes



Check Cam Lock position

- 3 When locked the Cam Lock should be set to the appropriate thickness setting for your tablet, as shown below. Setting one is for Apple iPad 2 or tablets up to 9mm thick. Setting two is for Apple iPad (without case) or tablets up to 13mm thick



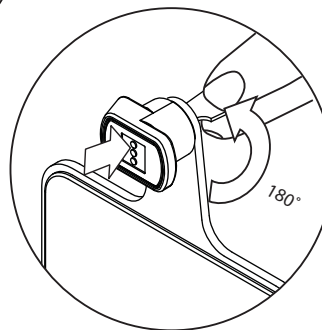
To change the Cam Lock setting see step 4. If already correct go to step 5

Adjust Cam Lock setting

- 4
 - 1 Rotate the Cam Lock into a horizontal position using the key



- 2 Secure the key, push the cam lock inwards and rotate 180° anti-clockwise until it clicks

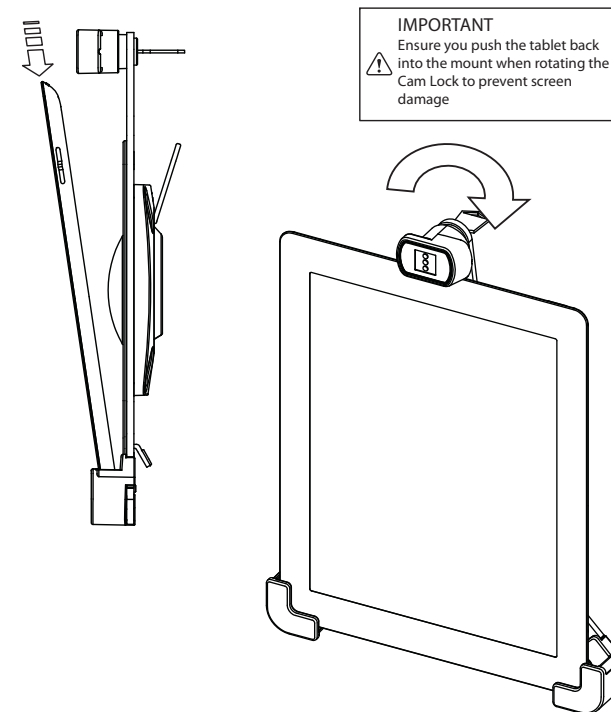


- 3 Rotating the Cam Lock back into place the setting should now be correct



Insert tablet and secure using Cam Lock

- 5 Rotate Cam lock into horizontal position using the key. Insert bottom of the tablet into the feet and push the tablet into the mount. Rotate the Cam Lock in place using the key to lock the tablet



Remove key to leave tablet secured in place

