

**Panel moves inwards and then up**

**The screen comes out to be flush with the surrounding panel work.**

**The QA bracket can then take the screen to any angle up to 45 degrees to the left or right.**

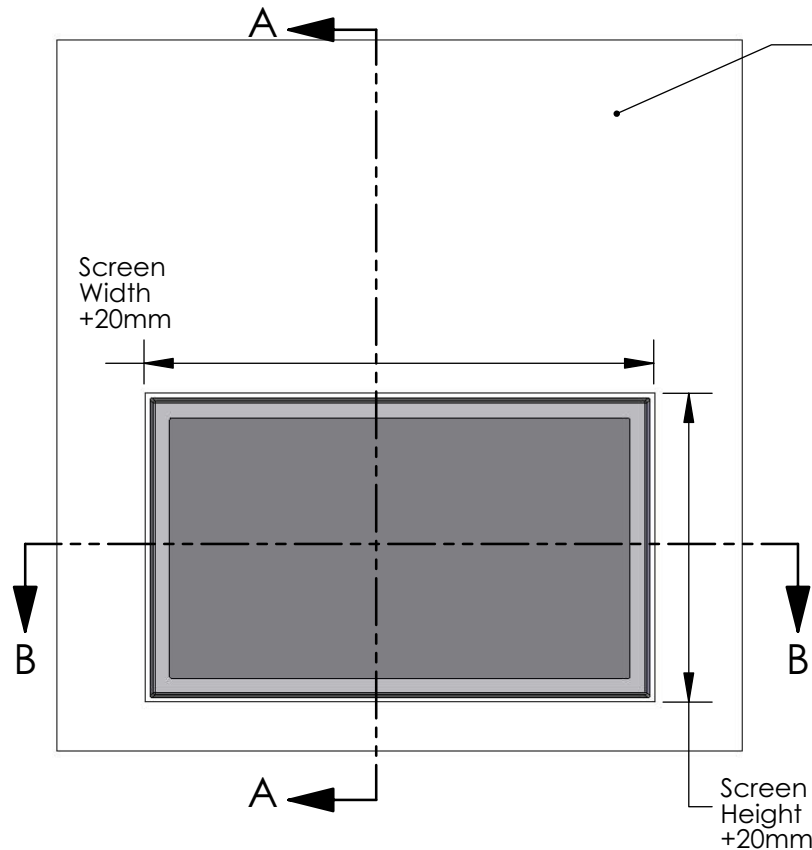


# SPS and QA2 Sliding Panel and Quad Arm

## Technical Sheet

Sheet 2 of 2  
ISSUE: 001

www.futureautomation.co.uk



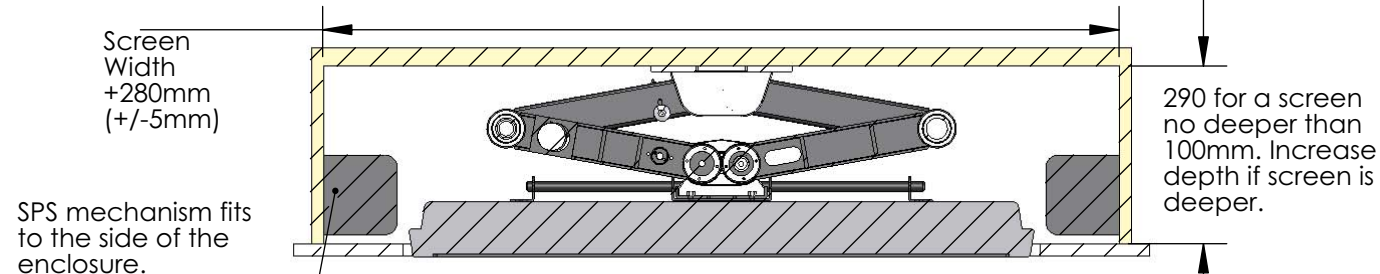
This surrounding panel work needs to be removable to aid in installation and servicing.

It must be no thicker than 25mm as the moving panel can only go back a fixed distance of 40mm before going up.

See QA2 Tech for wall plate size and details.

Maximum screen size is 50" so that the QA bracket can achieve an angle of 45 degrees to the left and right.

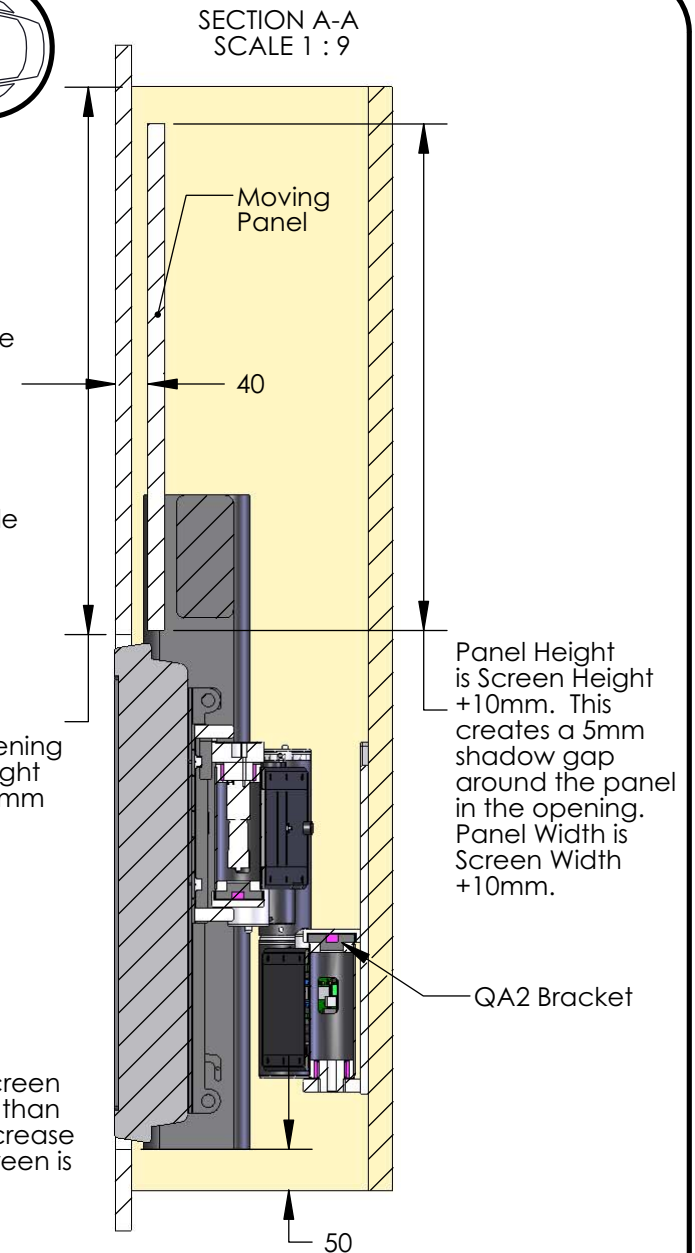
Screens deeper than 100mm can reduce this angle. Maximum screen weight is 50Kg.



SPS mechanism fits to the side of the enclosure.

QA2 bracket fits to the back of the enclosure.

SECTION B-B  
SCALE 1 : 12



SECTION A-A  
SCALE 1 : 9



# FUTUREAUTOMATION